

FREE



Collection of Biology Prints for Your Classroom

For more materials please visit my TpT store

[http:// www.teacherspayteachers.com/Store/I-Believe-In-Montessori](http://www.teacherspayteachers.com/Store/I-Believe-In-Montessori)

and my blog

<http://ibelieveinmontessori.blogspot.com>



HOW THIS MATERIAL CAN BE USED:

- ~ you can use them as classroom posters
- ~ you can hang them according to the unit studies, for example, you can hang cow picture during farm study or birds during bird units
- ~ to my mind these prints are art so children also will see and enjoy beautiful art
- ~ some of them can be used as cards for learning plants, vegetables, fruits, parts of the plants, insects, animals
- ~ some of them can be used for colours learning (for example I have several identic flower pictures in different colors)
- ~ they are perfect as matching cards (also during unit studies for example), just print them in two copies and they are ready
- ~ they are great for infants and toddlers because of their natural and realistic look



Thank you for downloading this material!

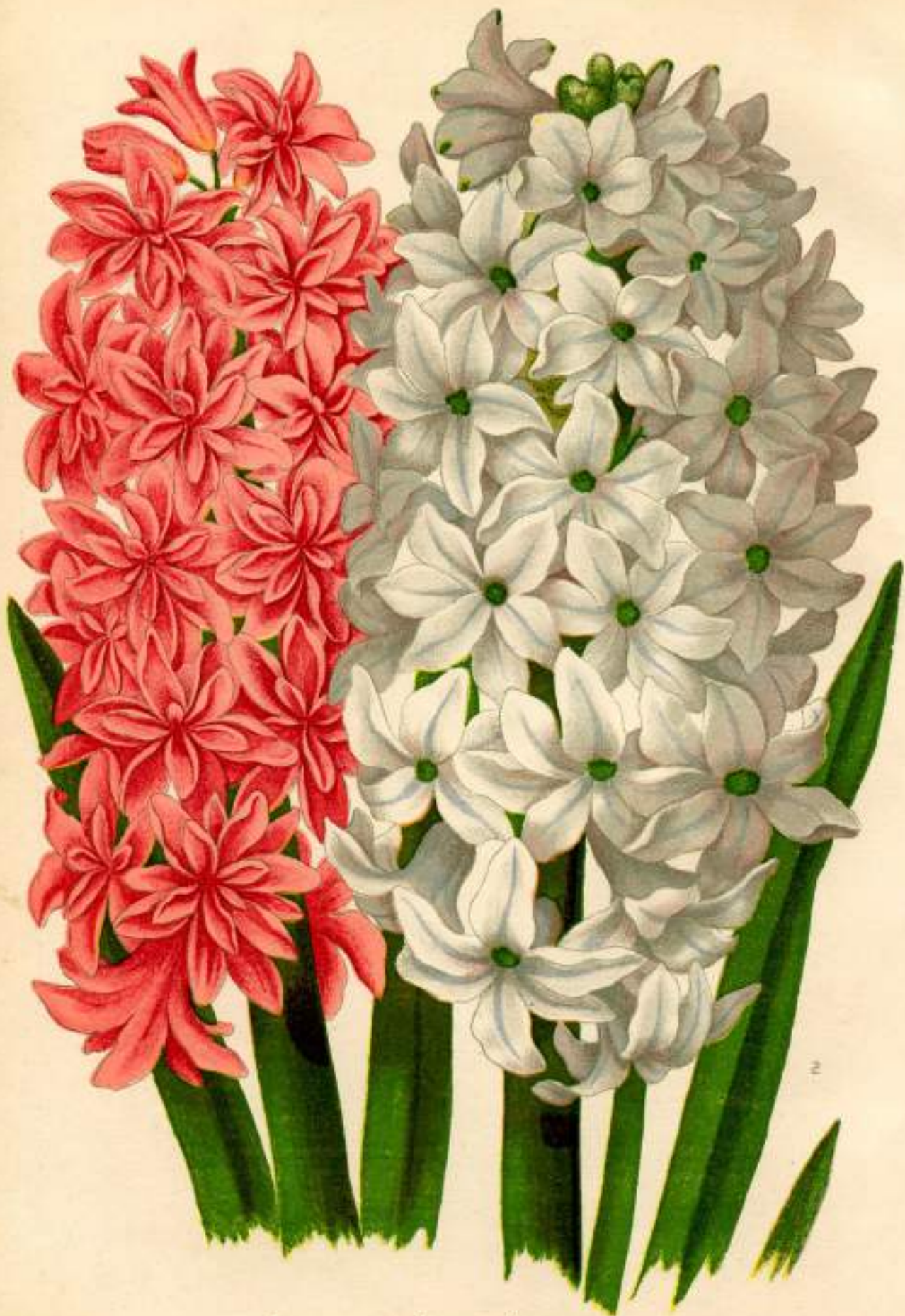
★ Please be so kind to provide a feedback for this product. I highly appreciate your view! Thank you ★





SYRINGA VULGARIS var.
LILAS DE LINDLEY.

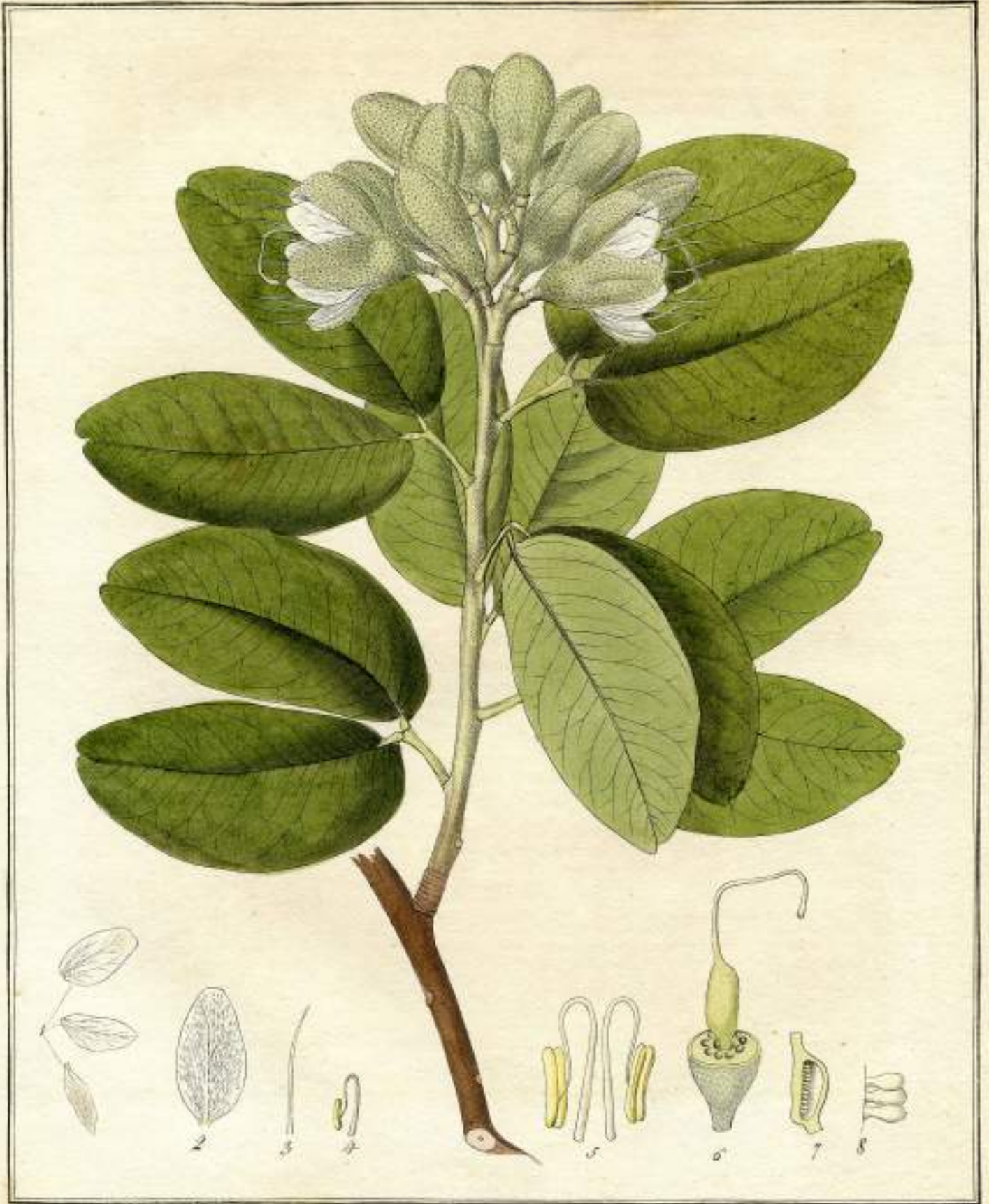
1874. Rep. in *Botanical Magazine*



DOUBLE AND SINGLE HYACINTH.

1. NOBLE PAR MERITE.

2 GRAND LILAC.



Hymenaea Candeliana.

V. Smeatman del.



CAMELLIA MADAME P. DE PANNEMAEKER.



The Greatest of all Cannas
"Flamingo"

See preceding page for description
Originated and for sale only by
THE DINGEE & CONARD CO.
West Grove, Pa.

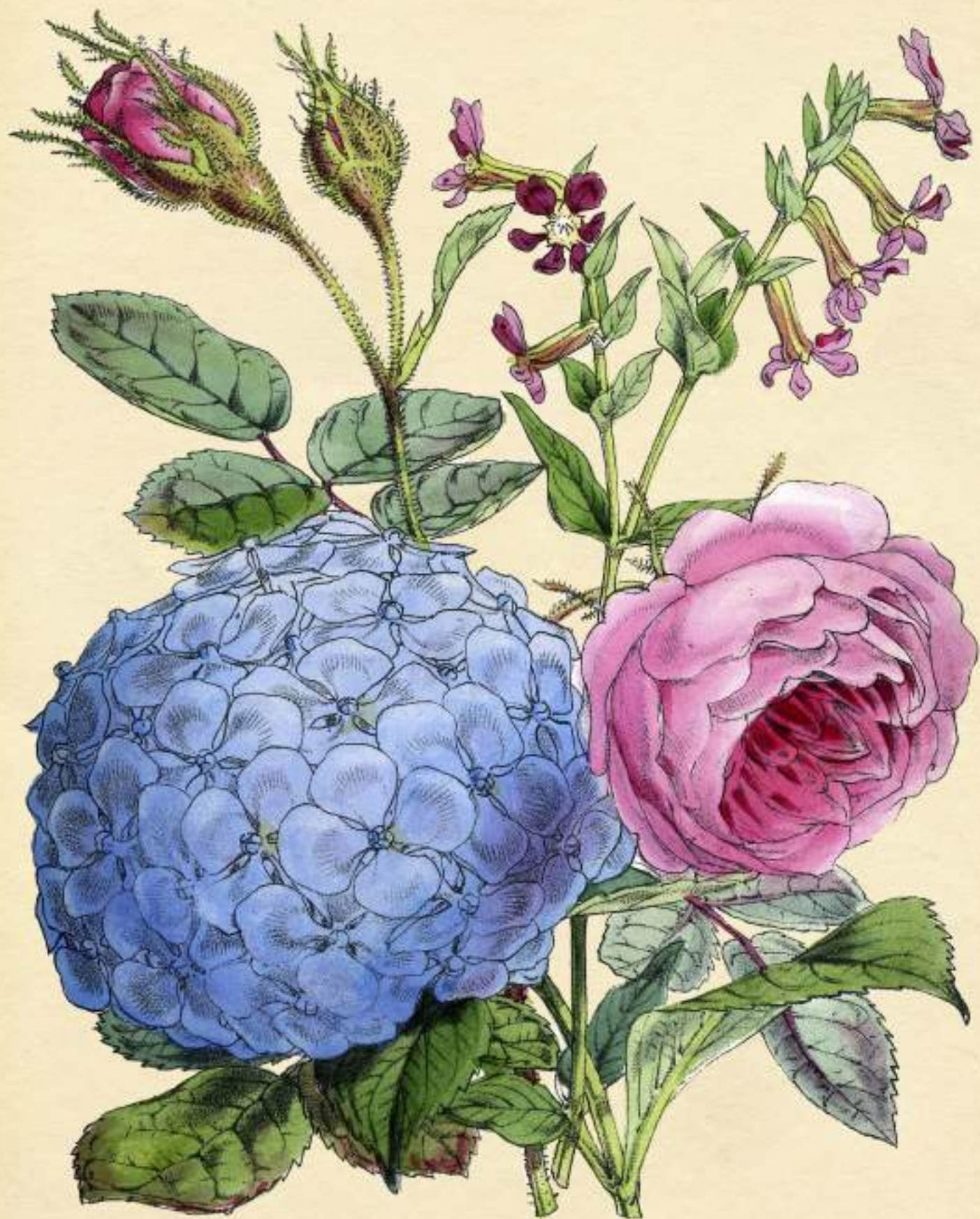


WHITE OX-EYE.











Lavandula Spica



LAVENDER





TULIPS.

1 STANDARD ROYAL
2 SAMSON

3. YELLOW PRINCE
4. CROWN OF ROSES.



a Rose
b. Lupin.
c. Carnation.



d. Larger Convolvulus.
e Pansy
f. Honeysuckle



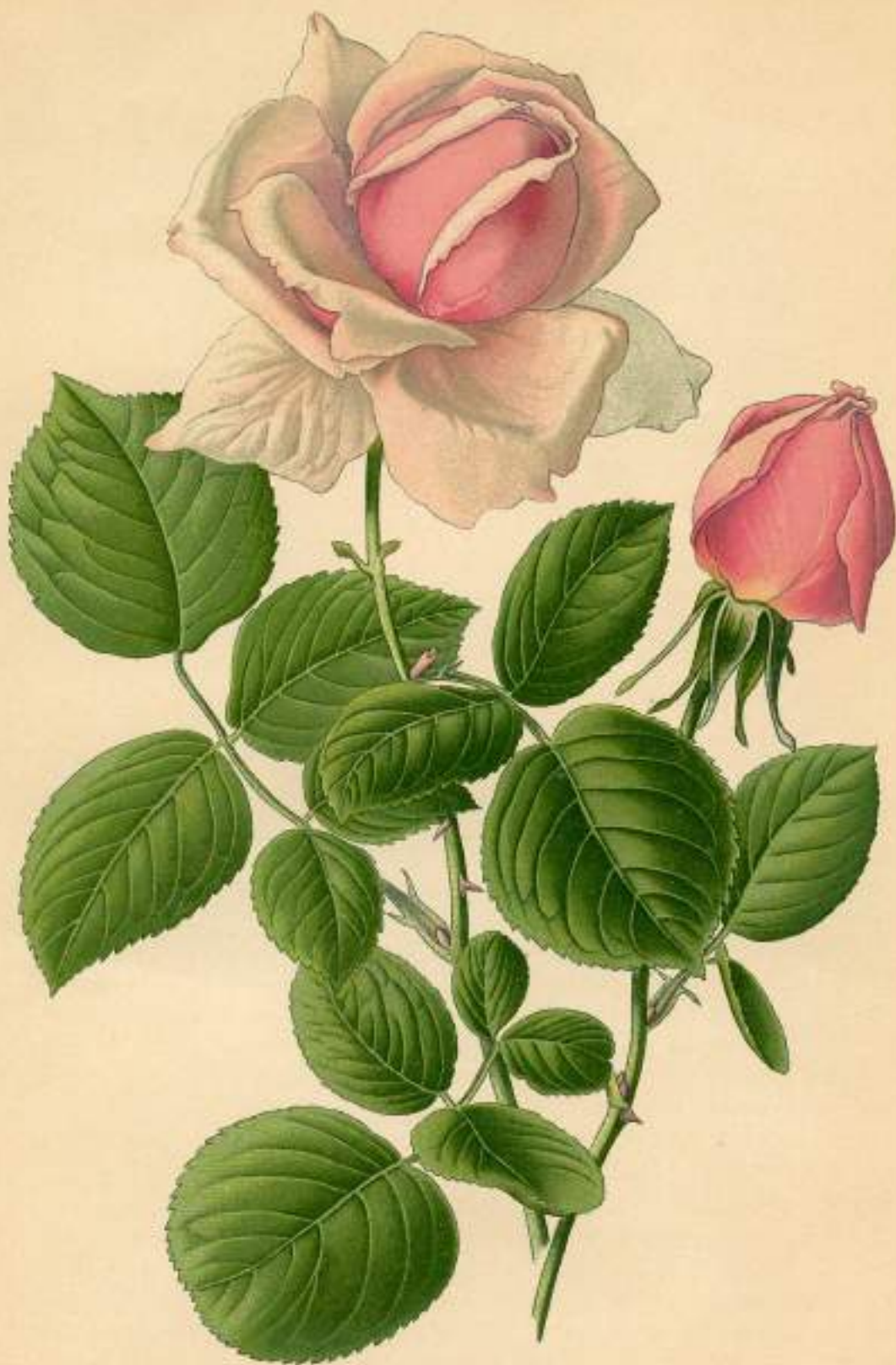
MADAME VICTOR VERDIER



Rosa Centifolia.



ROSE CHARLES LEFEBVRE



HYBRID TEA ROSE—"LA FRANCE"



BOURBON ROSE "SOUVENIR DE LA MALMAISON"



Illustration by Miss M. M. M. M.

LANCIPOLIUM LILY RUBRUM





Painted for Miss Mirella

GROUP OF GERANIUMS







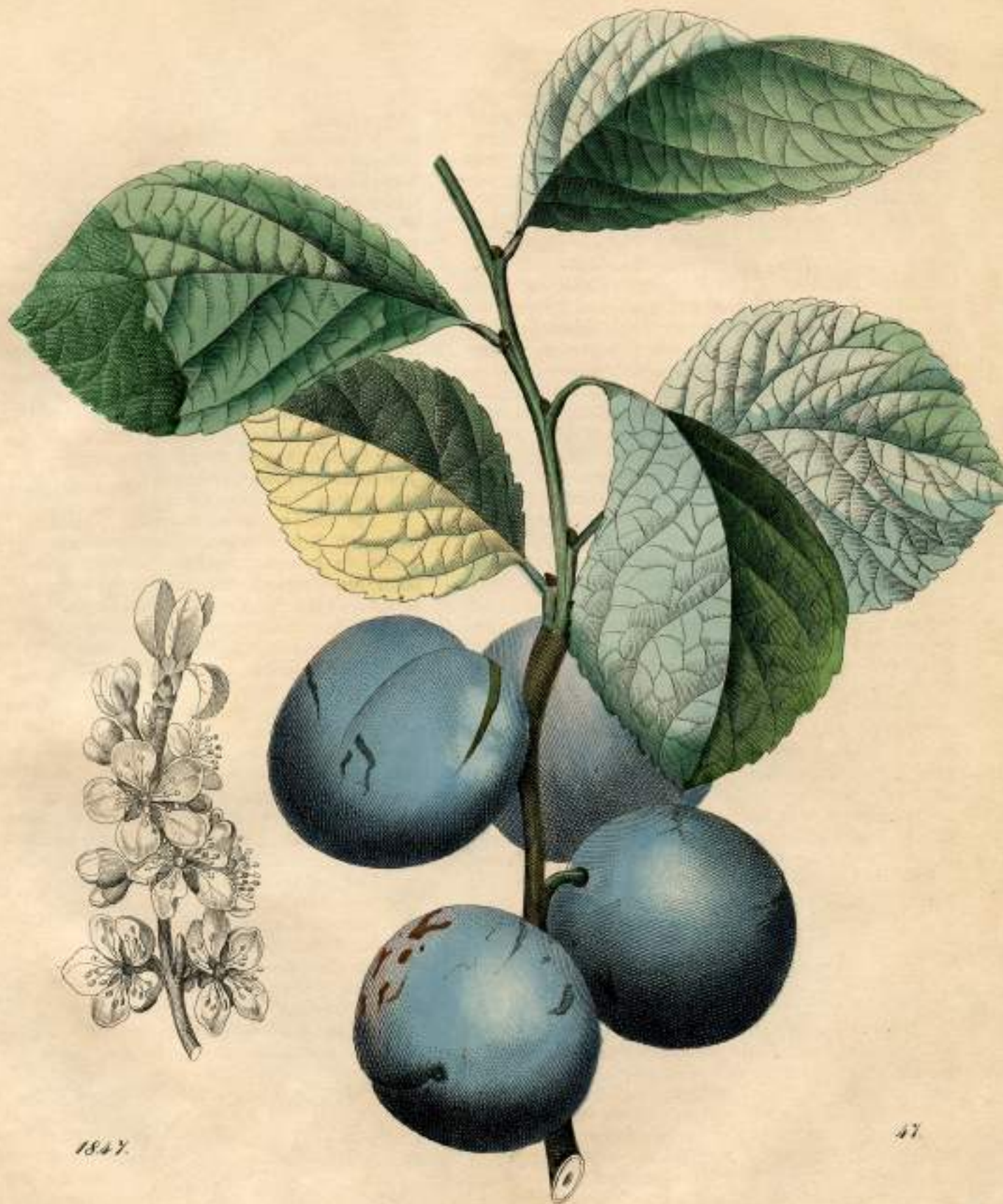




Del. de P. de la Roche

Groscillier épineux.

1. Prune de Gathoye. 2. Reine-Claude de Gathoye. 3. Reine de Seba. 4. vert poilu anglais.



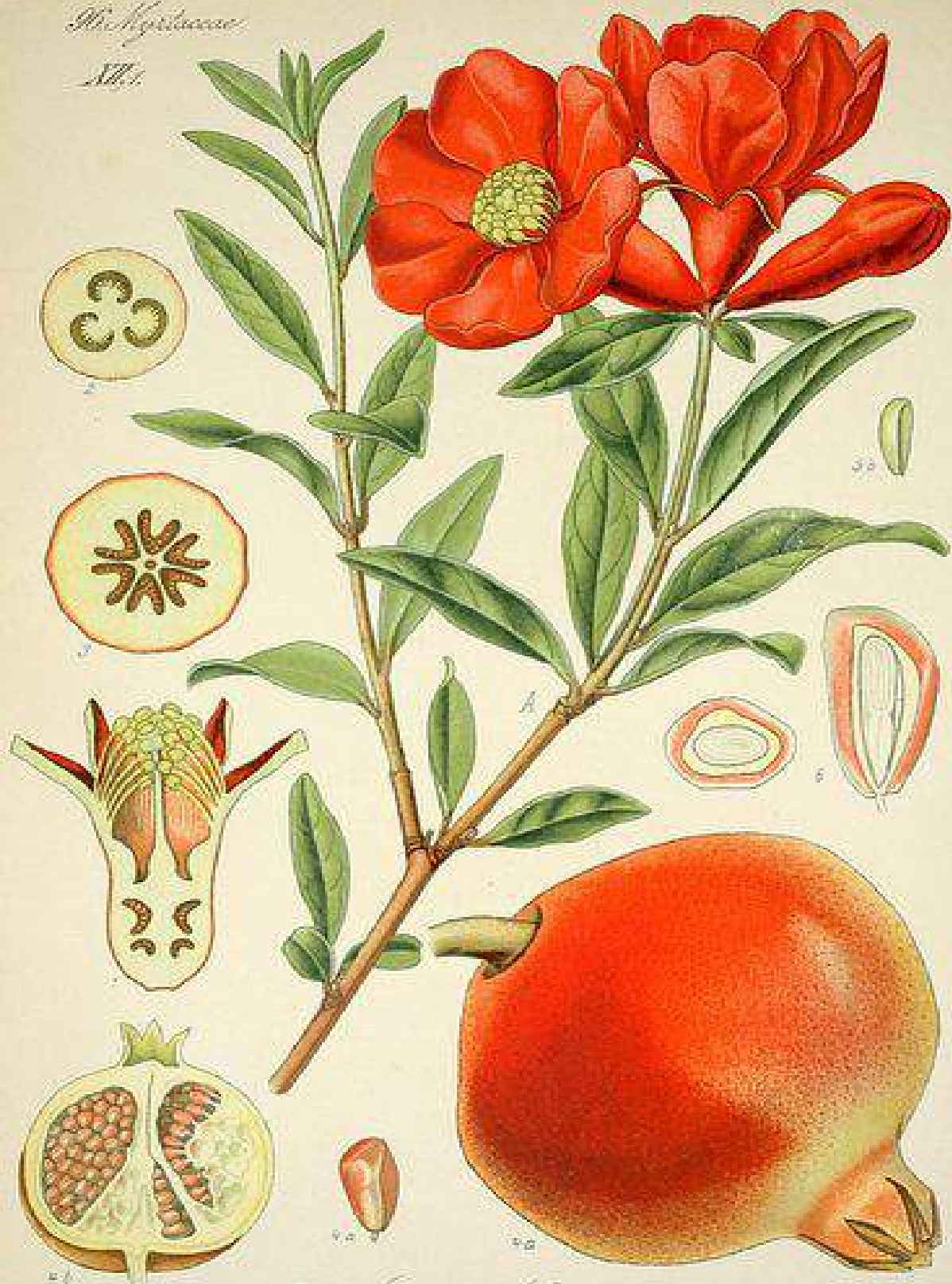
1847

47



Malvaceae

M.



M. Punica Granatum L.

Granate.

XVII, 1. 105. Rosaceae.
Cerasus.



395.

Cerasus vulgaris Miller.

Sauerkirſche.





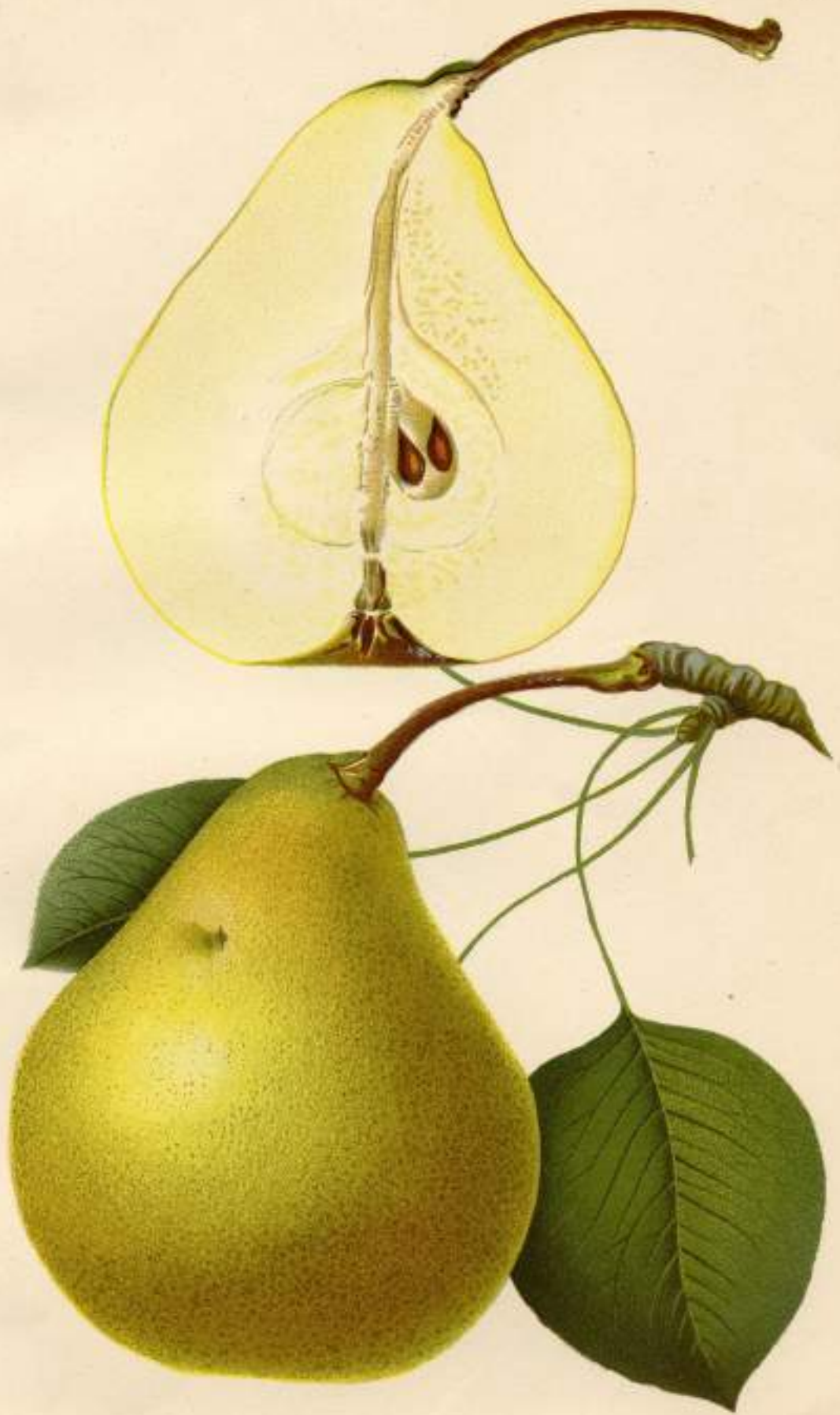


W. H. PRESTLE, FECIT.

THE BATH CO. N. Y.

SATSUMA.

Synonym Unshiu or Danshiu.









Capsicum Annuum



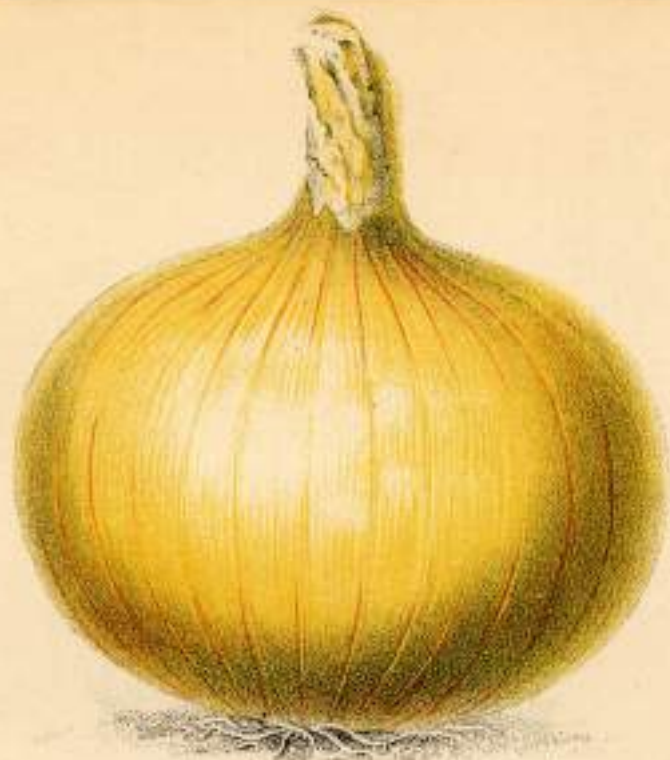
c Pea.

d Scarlet Runner.

KITCHEN VEGETABLES



- a Cabbage.
- b Turnip.
- c Brocoli.



YELLOW GLOBE DANVERS.



LARGE RED WETHERSFIELD.



ORLANDO, FLA. V. 1885. LE.

V



MUSA VITATA.



SANCHEZ & NOS. LIT.
XXXVIII



FIG. 20.—WARTED AGARIC

(Amanita pantherina.)

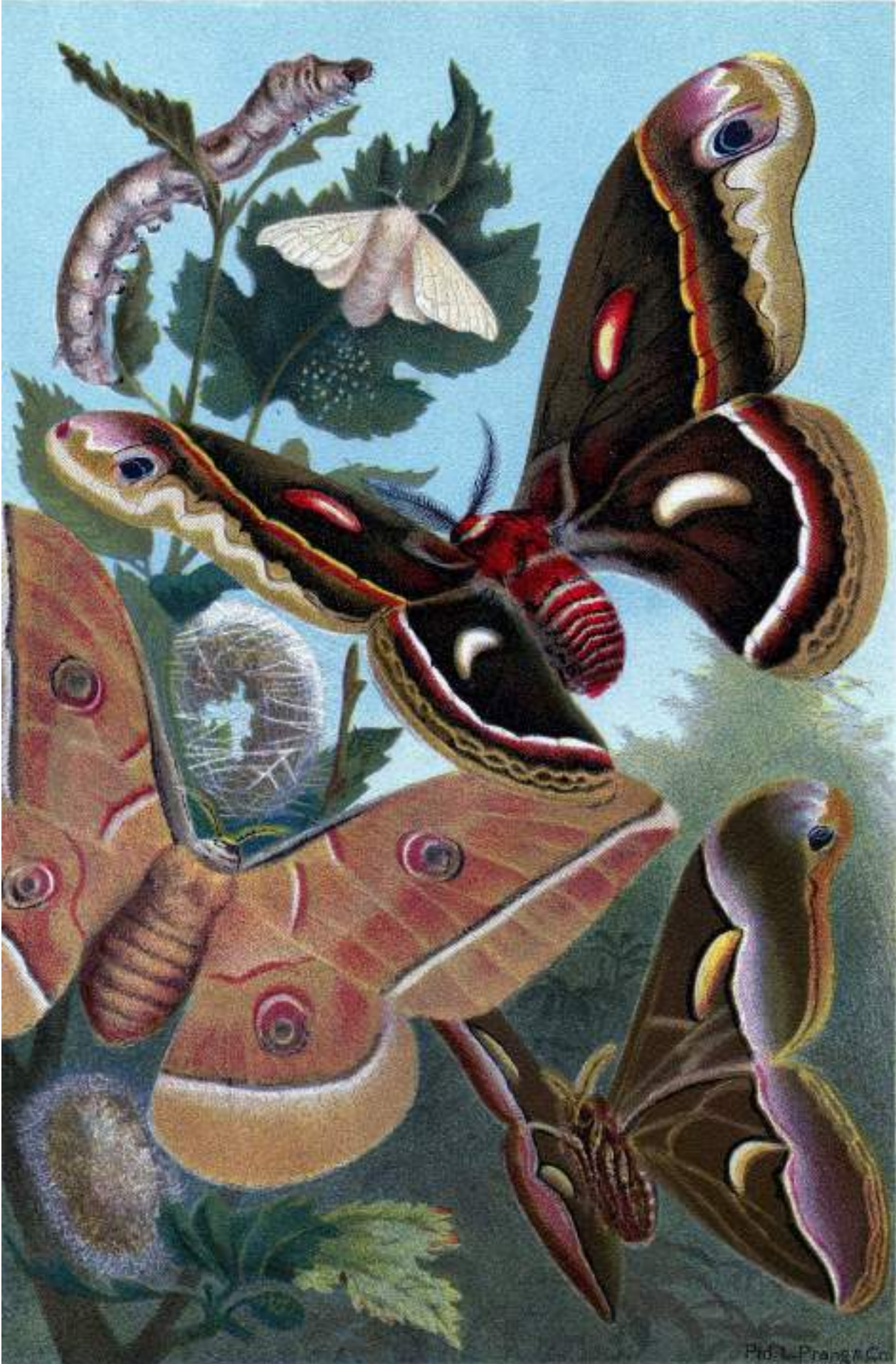


FIG. 4.—WARTY CAPS
(*Amanita rubescens*).



1847

20



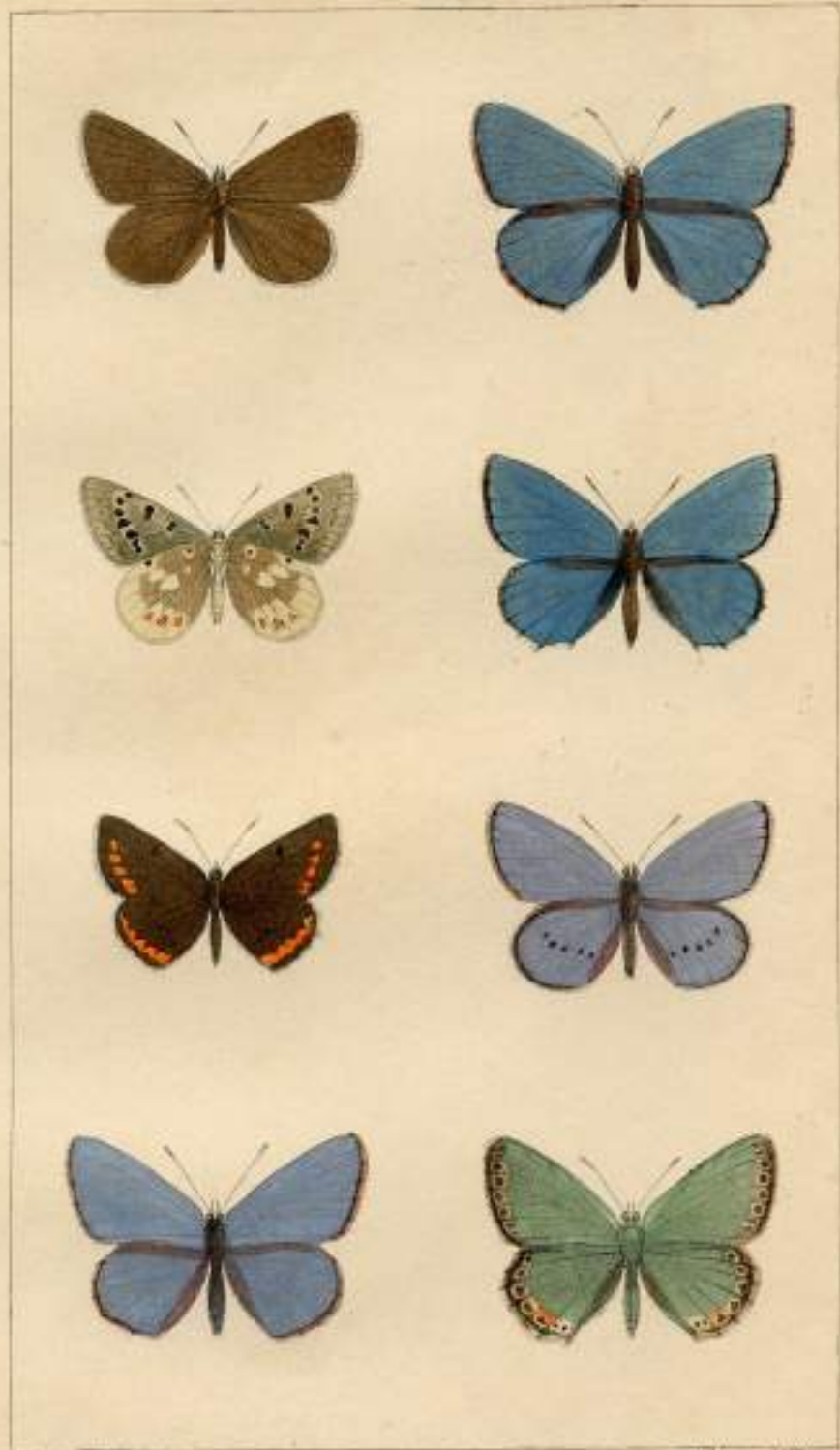


FA. SEGUY





1. *Heliconia fenestrata*.
2. *Anthomyza Teresia*.



W. A. Wood delin.

Bequest D. D.

genre: *Polyommata*

P. Eumedon

P. Cebeticus (Linn.)

P. Agathis

P. Euborin

P. Icarus

P. Albus

P. Dorylus

P. Corydon





1. *Tylocopa latipes*.
2. *_____ tenuiscapa*.



BULLFINCH



BULLFINCH.



MARYLAND YELLOW-THROAT



BARN SWALLOW.



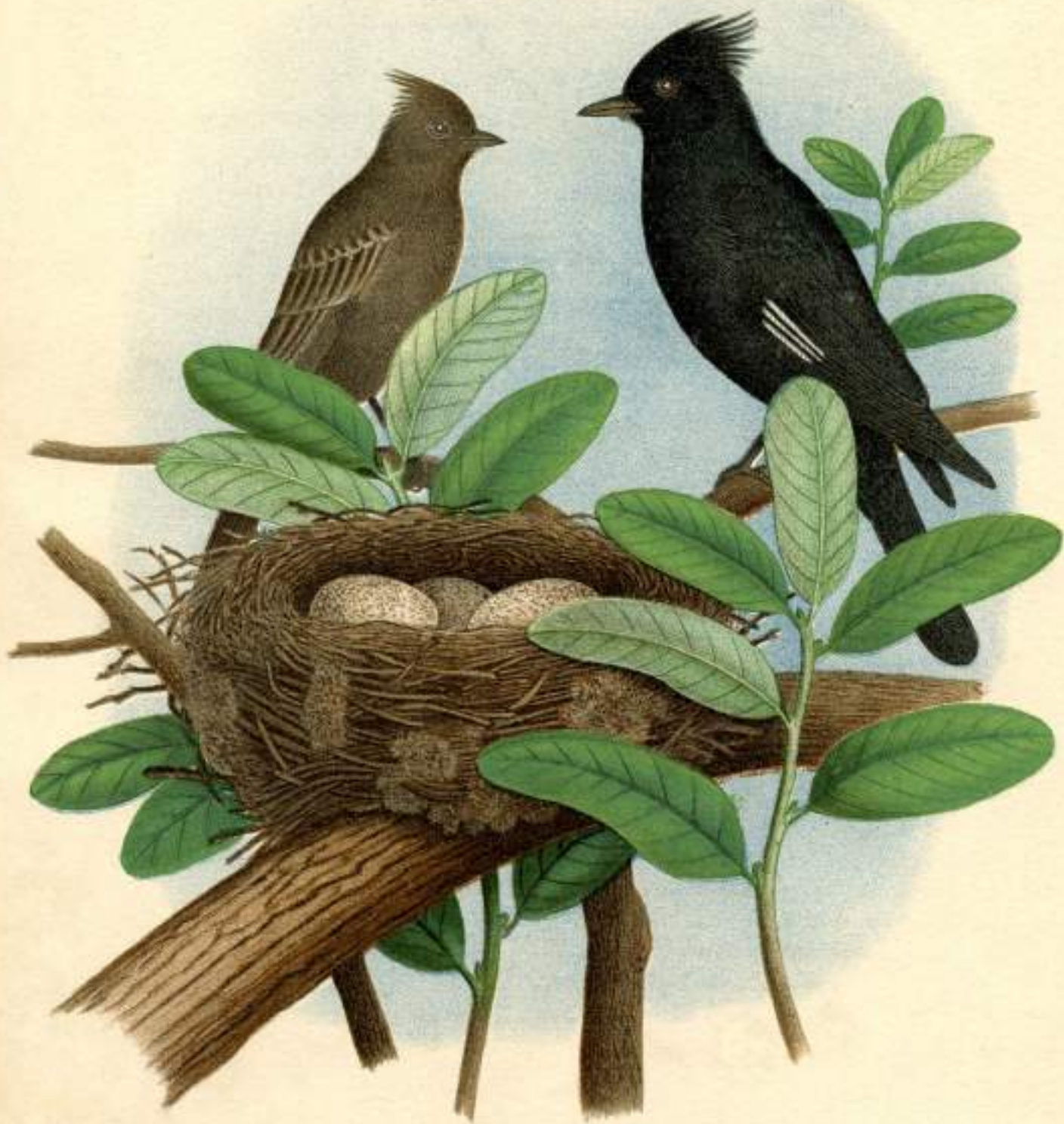
LITTLE OWL.



TAWNY OWL.



Snowy Owl.



BLACK-CRESTED FLYCATCHER.



BLUE JAY.

FIELDFARE.





Wynman & Co. London

GREY JUNGLE FOWL.

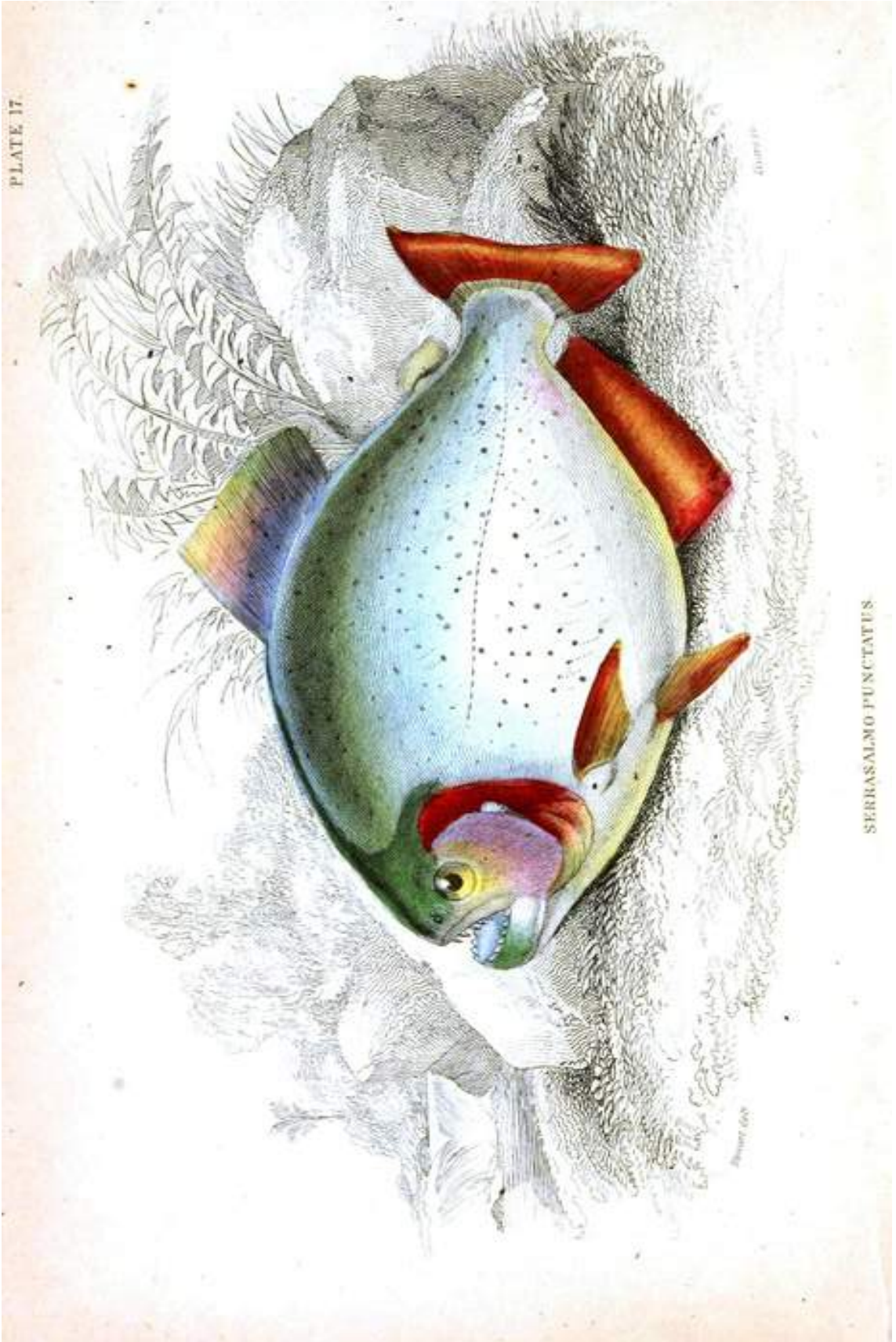


GRYSTES SALMOIDES.



London: Publ. by the Author by A. Duncanson N.B. Edinburgh: 1802.

PLATE 17



SERRASALMO PUNCTATUS

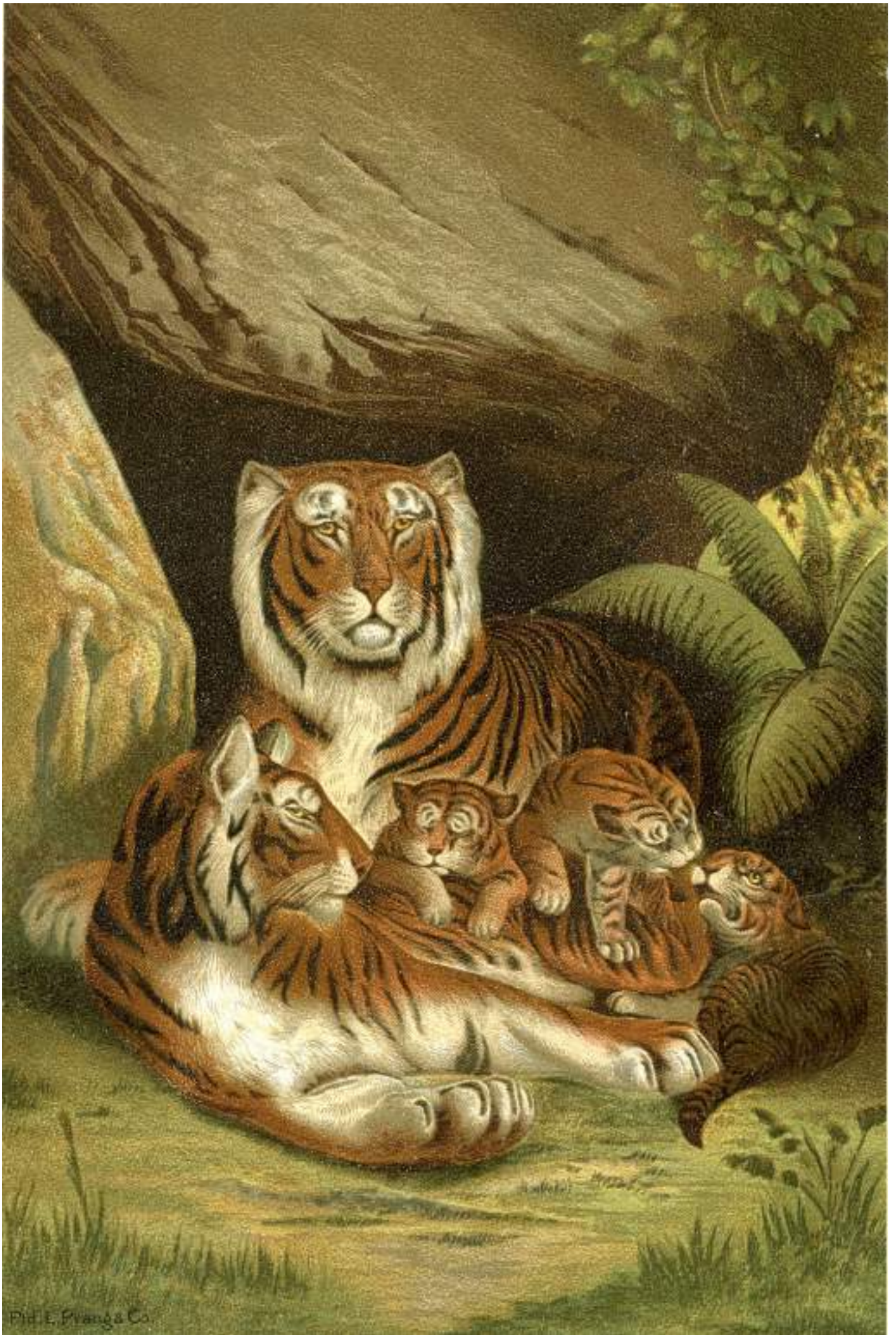




THE CAT



THE HORSE





THE RACCOON

As the Raccoon of the Tidewater Country

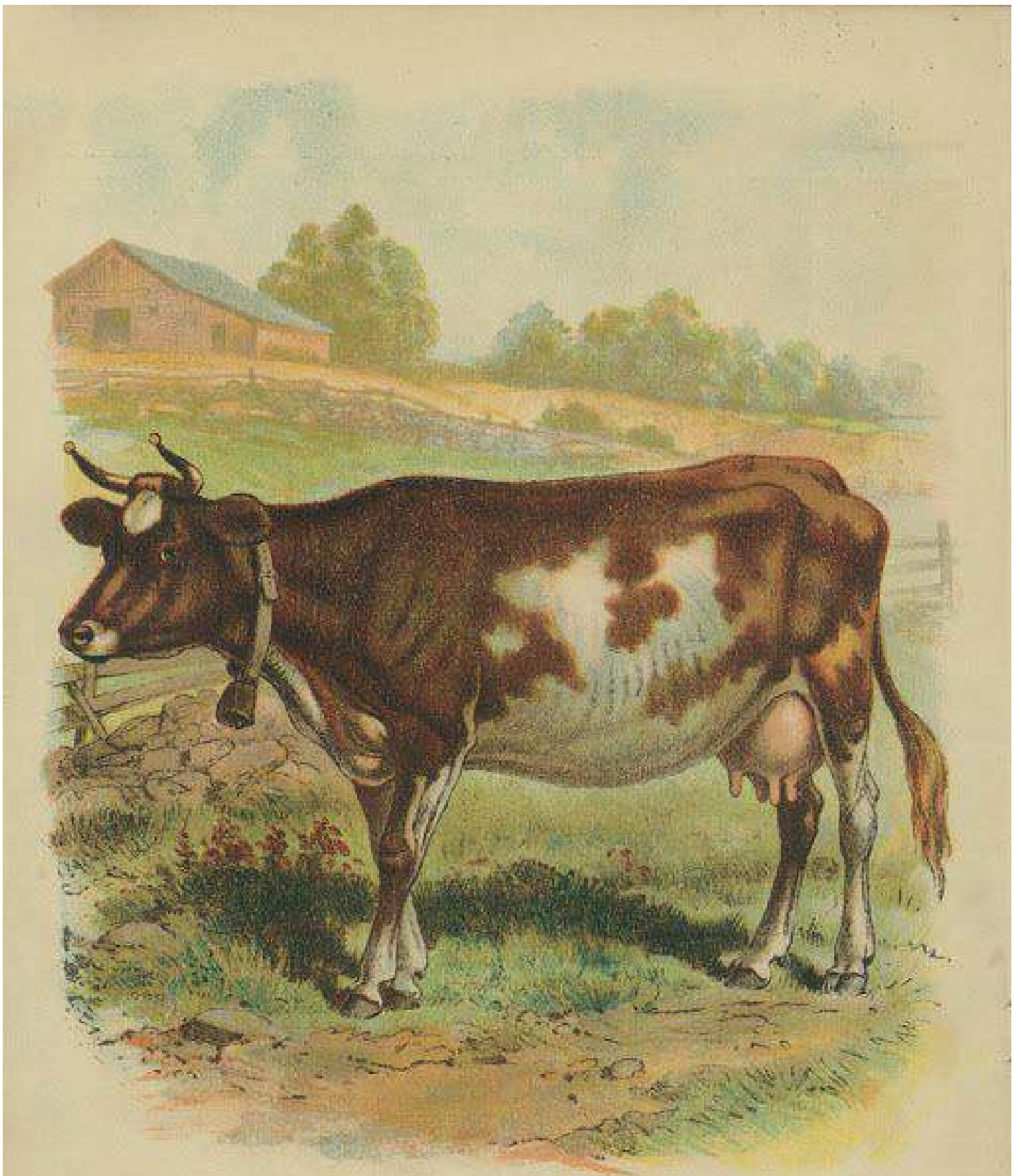
Painted by Thomas M. Davis



Atwood del.

THE SQUIRREL.

Leaves 20.



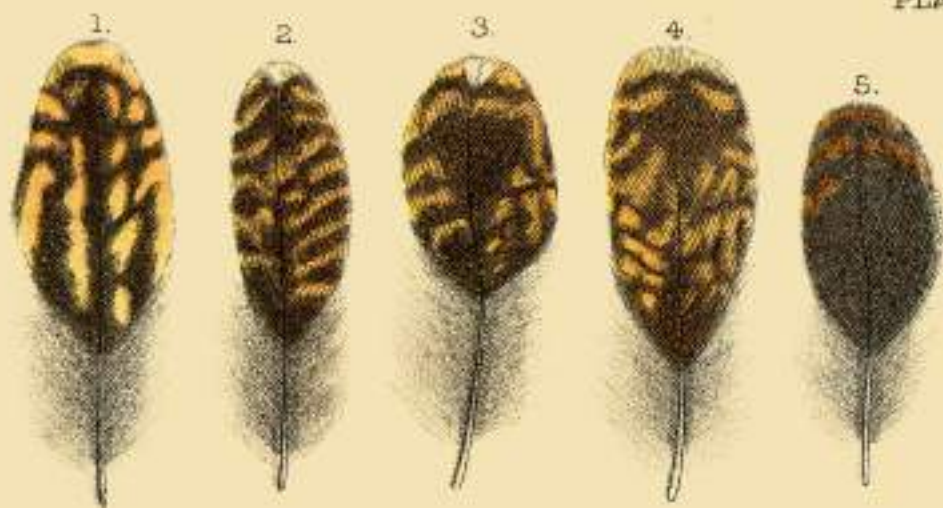
THE COW



Herbert
Andrewson







FEATHERS OF SCOTCH GROUSE